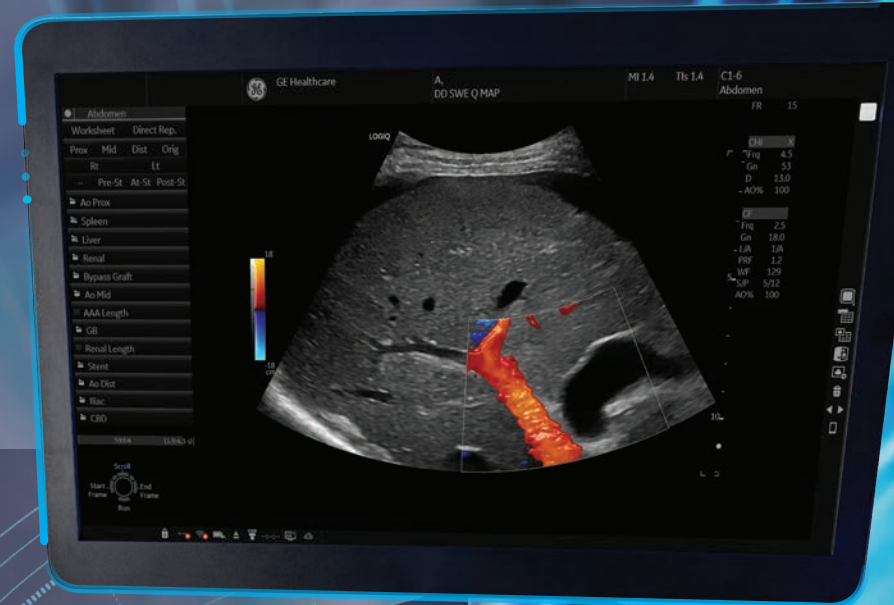


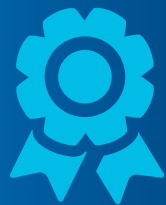


LOGIQ™ E10s

EMPOWERING YOU TO
MAKE THE DIFFERENCE

gehealthcare.com





Next-generation, leadership ultrasound, the new LOGIQ E10s system from GE Healthcare provides multi-purpose capabilities in a scalable configuration – a smart investment that will meet your patient needs and support your growth for years to come.

➤ EMPOWERING Confident Diagnosis

Experience the exceptional images and increased clinical flexibility to address a wide range of patients and facilitate an accurate diagnosis.

Scalable to a whole-body solution: Our full suite of robust, standard features and scalable options allow you to configure the optimal system to meet your imaging needs – head to toe, obese to thin, neonate to geriatric.

Exceptional imaging: Next-generation cSound™ Architecture automatically delivers images of exceptional uniformity, from near to far field. The system acquires and reconstructs data with 48x the data throughput and 10x the processing power of our previous systems. There's no need to adjust the focus – the information you need is there, instantly.



E-Series and XDclear™ probes: Powerful high fidelity and broad bandwidth produce high resolution images whether scanning superficial or deep targets, or at any point in between.

Optimized for small vessel imaging: An innovative new tool, Radiantflow™, provides a near-3D look when visualizing blood flow in tiny vessels, especially when combined with Micro Vascular Imaging (MVI).



➤ EMPOWERING Comprehensive Tools

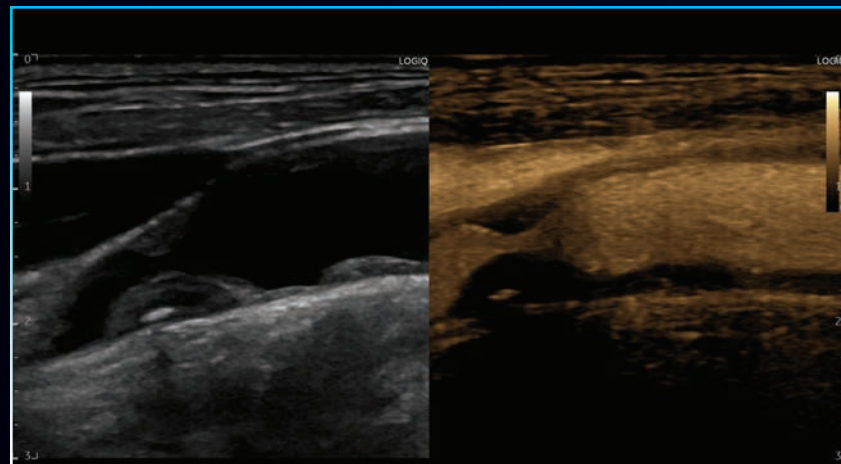
Choose from a robust offering of tools to help improve the speed and precision of diagnosis, guidance and treatment in abdominal, cardiac, OB/GYN, vascular, breast, pediatrics and musculoskeletal applications. Among the available capabilities:

2D Shear Wave & Strain Elastography: Determine qualitative, quantitative and semi-quantitative assessment of tissue elasticity. Now available with a Shear Wave Elastography Quality Indicator to support confident measurements.

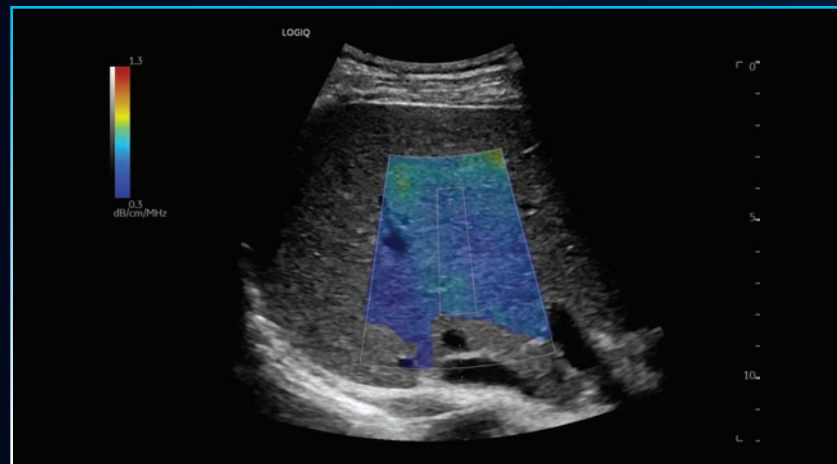
Ultrasound-Guided Attenuation Parameter (UGAP): Quantifies liver steatosis to aid in early identification and monitoring of patients with NAFLD, NASH or ASH.

Contrast-enhanced ultrasound (CEUS): Visualize tissue structure and lesion vascularity clearly to optimize diagnostic accuracy.

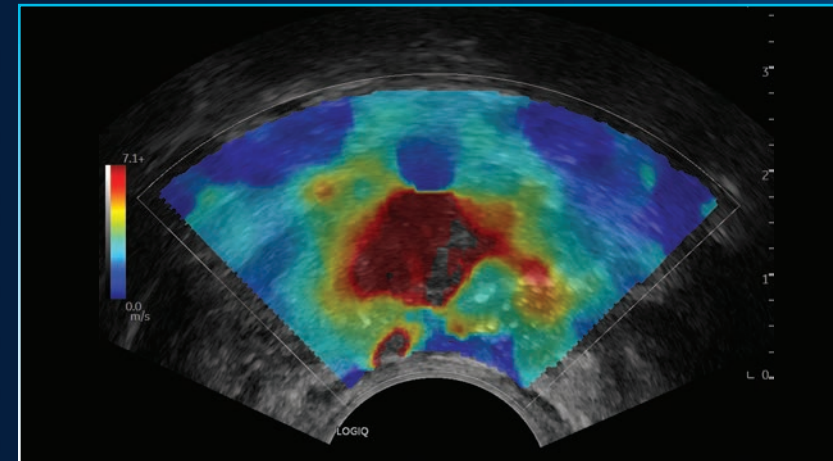
Photo Assistant app: Acquire photos of relevant anatomy via an Android™ smart device and include them with the clinical images in the report, providing valuable context.



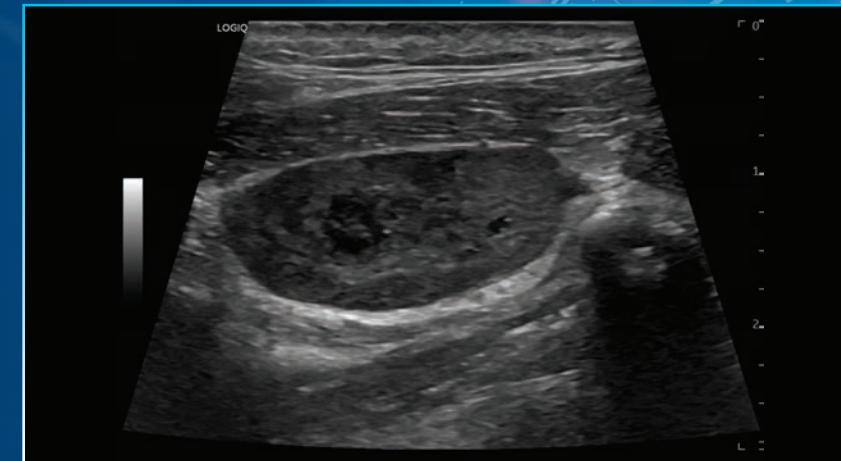
Carotid with plaque, L2-9-D



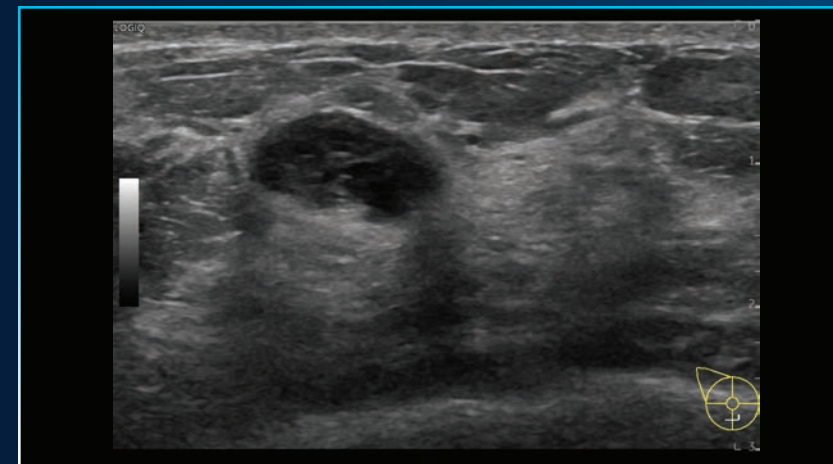
Liver UGAP, C1-6-D



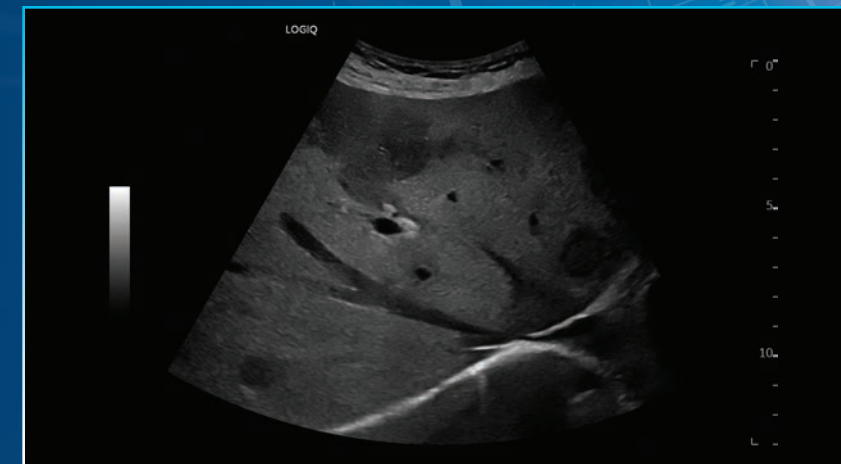
Prostate 2D Shear Wave Elastography, IC5-9-D



Lymph node, L8-18i-D



Breast mass, ML6-15-D



Liver with metastatic lesions, C1-6-D

➤ EMPOWERING Concise Workflow

Achieve new levels of workflow efficiency to stay ahead of your daily challenges. By leveraging the power of artificial intelligence (AI), the LOGIQ E10s helps reduce the number of steps required for excellent image optimization for the entire exam.

AI-based tools, powered by Edison

Among the AI-based tools available to help improve exam efficiency and consistency:

- **Auto Doppler Assistant:** Automatically adjusts the color box and angle, so users can complete exams in 20% less time with 50% fewer keystrokes
- **Auto Lesion Segmentation:** Automatically traces lesion boundaries and generates two-dimensional measurements with just a few keystrokes
- **OB Measure Assistant:** Reduces keystrokes and enhances reproducibility by automating key fetal measurements

Productivity enhancers

Integrated technologies function as virtual assistants to help users do more in less time with greater ease. Options include:

- **Scan Assistant:** Provides customizable automation at each step of an ultrasound exam, helping to reduce keystrokes and exam times
- **Compare Assistant:** View a prior study – ultrasound, mammography, CT or MR – and current images together in real time via a split screen on the monitor
- **Start Assistant:** Automatically launches the preferred setting when the user selects an exam description

Exceptional ergonomics

The LOGIQ E10s system is designed for busy departments – easy to use in any environment and clinical scenario.

- **Familiar user interface:** The new system offers greater functionality while maintaining the ease of operation and satisfying user experience that has become a hallmark of LOGIQ interface design
- **Exceptional mobility:** The system easily fits into crowded suites. With the optional Power Assistant battery, there's no need for re-boot, and you can even scan on battery power
- **Streamlined archiving and reporting:** Robust DICOM® connectivity allows images to be saved to a central location and reviewed alongside other imaging modalities



Powered By
Edison



> EMPOWERING Smart Investment



Ultrasound for today, platform for tomorrow

The LOGIQ E10s is the smart choice now and for the future with multi-purpose versatility and scalability to address your specific patient population.

A to A digital platform: From awareness to assistance, stay at the forefront of clinical imaging with our A to A digital platform, specifically engineered so you can add next-generation capabilities in the years ahead.

SonoDefense: Our multi-layer approach to cybersecurity helps keep the system safe and functional in the face of cyberthreats and helps protect patient data from unauthorized access.

Digital support: Wide choice of efficiency tools to help users, administrators, and operations staff improve productivity, including remote preset management, performance analytics, software/security updates, live clinical training, and advanced system diagnostics.



Product may not be available in all countries and regions. Full product technical specifications are available upon request. Contact a GE Healthcare Representative for more information. Please visit www.gehealthcare.com/promotional-locations.

Data subject to change.

© 2020 General Electric Company – All rights reserved.

GE, the GE Monogram, LOGIQ, cSound, Radiantflow, and XDclear are trademarks of General Electric Company. DICOM is a trademark of the National Electrical Manufacturers Association. Android is a trademark of Google, Inc.

Reproduction in any form is forbidden without prior written permission from GE. Nothing in this material should be used to diagnose or treat any disease or condition. Readers must consult a healthcare professional.

To determine whether individual features are standard or optional, consult with your GE Healthcare sales representative.

February 2020 JB75036XX(1) ULTS-0464-02.20-EN-US